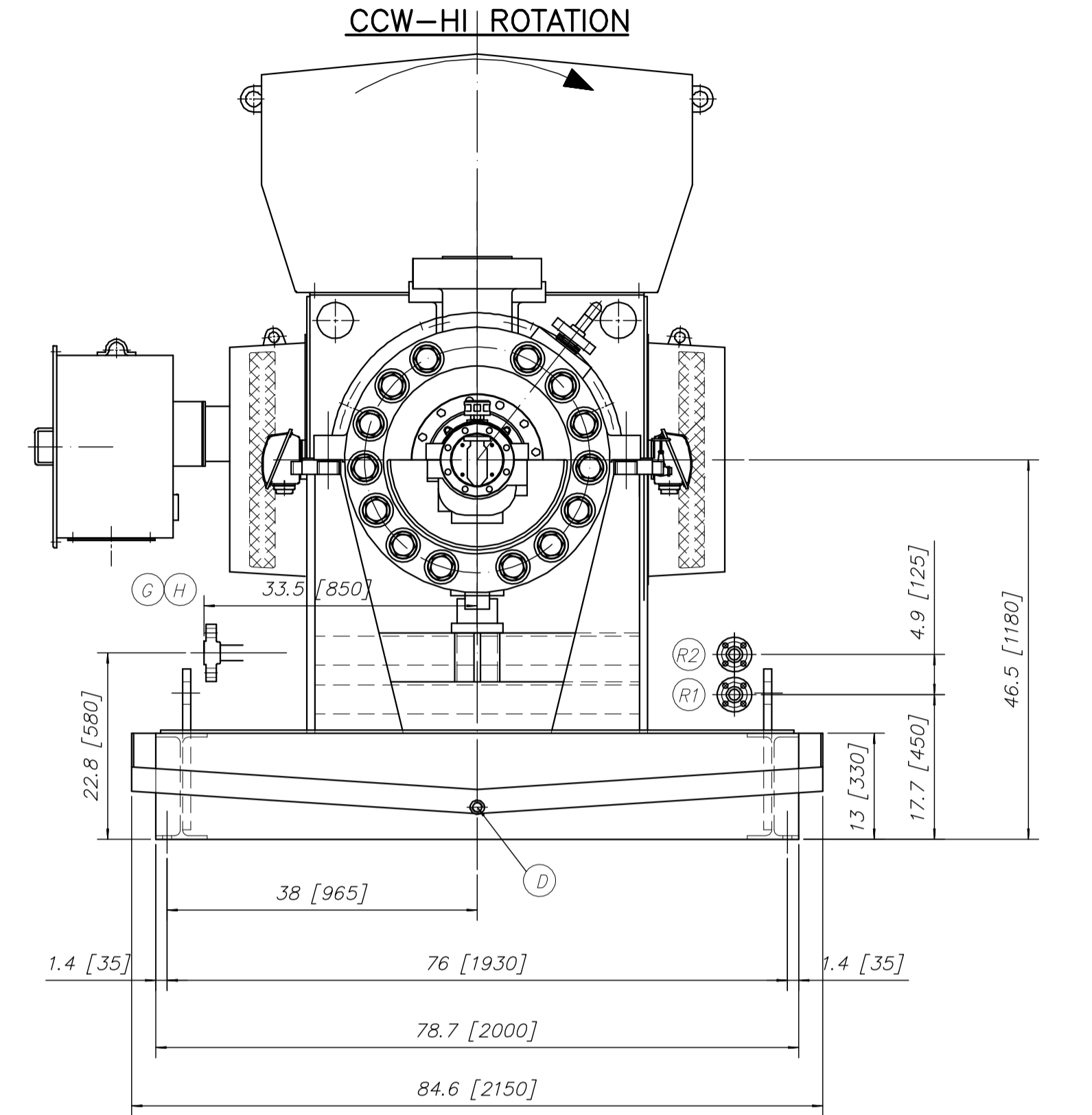
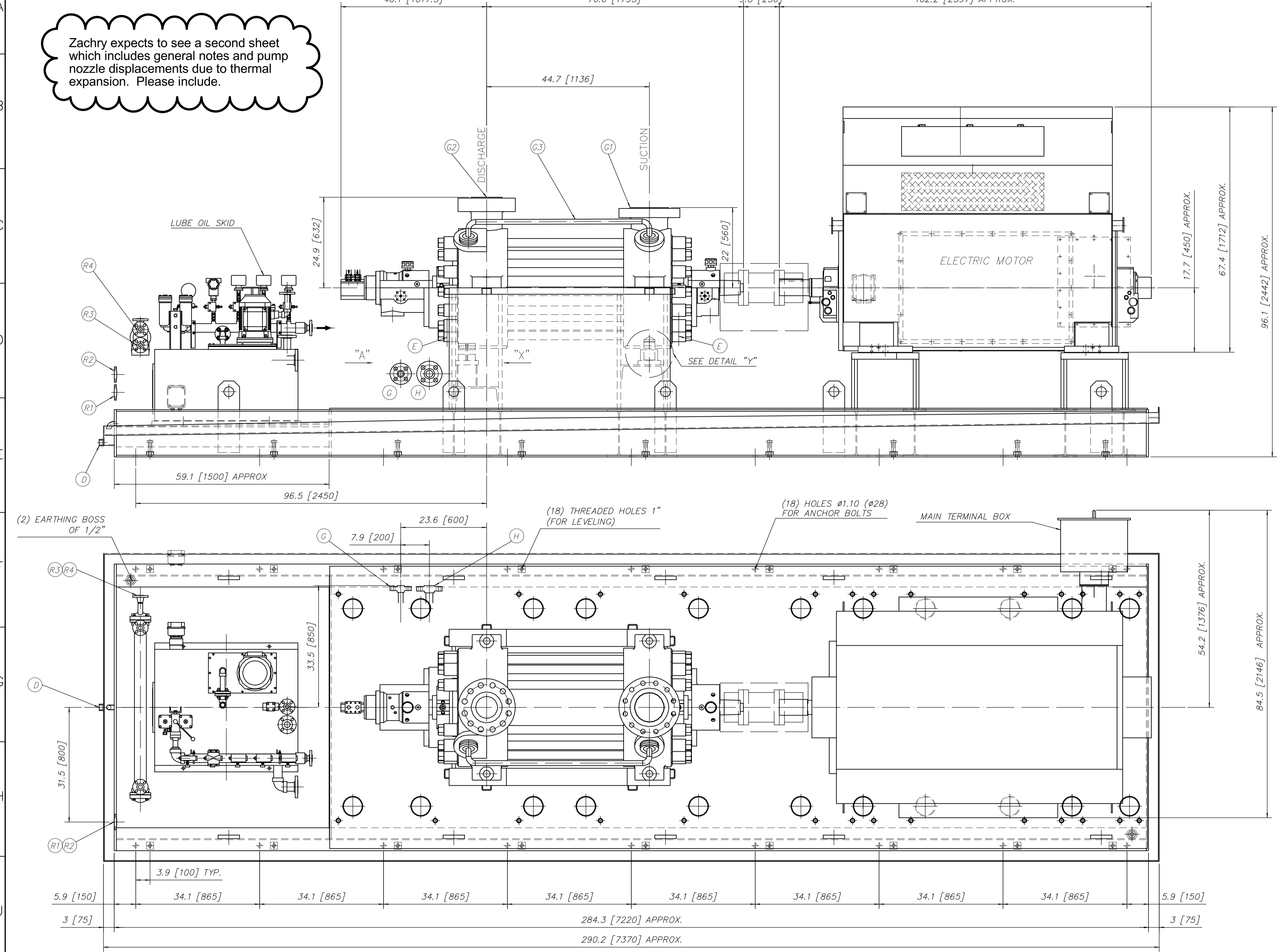


Zachry expects to see a second sheet which includes general notes and pump nozzle displacements due to thermal expansion. Please include.



VIEW "A"

VIEW FROM "X"

PUMP KEY BLOCK (REFER TO GENERAL NOTES FOR DETAILS)

DETAIL "Y"

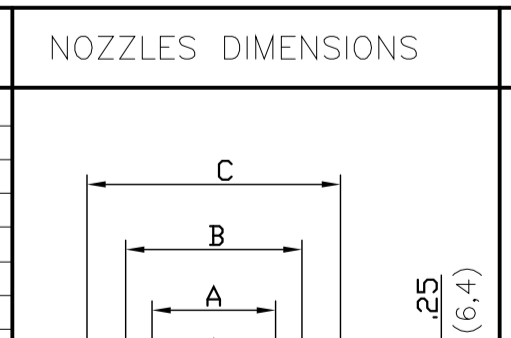
PUMP PIN BLOCK (REFER TO GENERAL NOTES FOR DETAILS)

Confirm anchor bolt locations are "Certified" for foundation construction.

PRELIMINAR

PUMP DATA		MOTOR DATA	
TYPE	6X15WXH	SUPPLIED	FLWSERVE
NUMBER OF STAGES	7	MANUFACTURER	TECO
ROTATION:	CCW - HI	TYPE	ANZK-S2
R. P. M.	3580	POWER	3900 HP
SUCTION NOZLE	TO MATCH 8" ASME B16.5 CL.600 R.F.	SPEED	3600 R.P.M
DISCHARGE FLANGE	TO MATCH 6" ASME B16.5 CL.1500 R.F.	VOLTAGE	4000 V
		ENCLOSURE	

MAXIMUM ALLOWABLE NOZZLE LOADS (2 x API)			
ANY DYNAMIC LOADS THAT MAY EXIST DUE TO RESIDUAL UNBALANCE ARE NEGLECTIBLE WITH REGARD TO FOUNDATION DESIGN AND LOADING.			
SUCTION (2x API 8TH ED.)		DISCHARGE (2x API 8TH ED.)	
FX = 1700 LBS.	MY = 5200 FT-LBS.	FX = 1120 LBS.	MY = 3400 FT-LBS.
FY = 1400 LBS.	MY = 2600 FT-LBS.	FZ = 920 LBS.	MY = 1740 FT-LBS.
FZ = 2200 LBS.	MZ = 3800 FT-LBS.	FY = 1400 LBS.	MZ = 2600 FT-LBS.
FR = 3120 LBS.	MR = 7000 FT-LBS.	FZ = 1400 LBS.	MZ = 4620 FT-LBS.

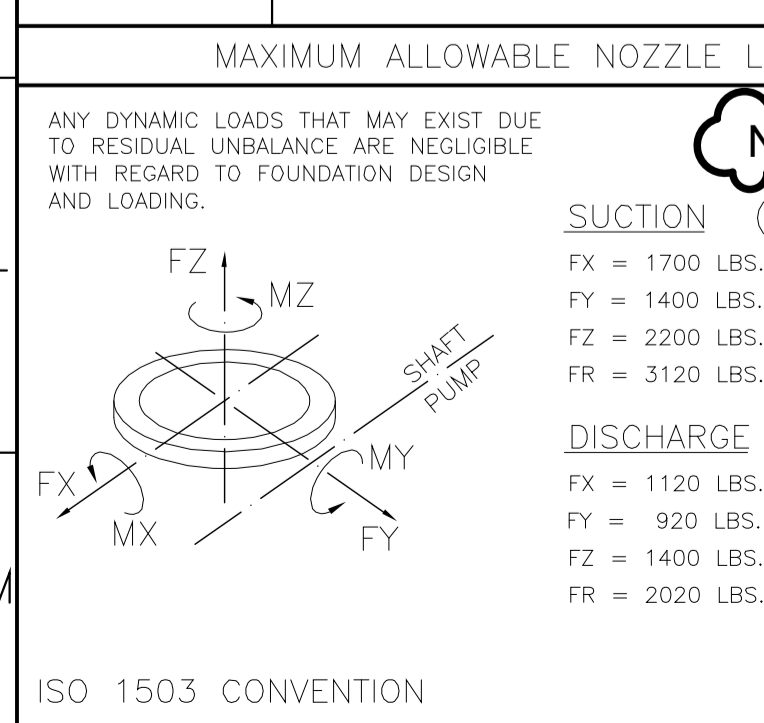


NOZZLES DIMENSIONS	
(N) HOLES, Ø E	
(G1)	(G2)
SUCTION TO MATCH 8" CL.600	DISCHARGE TO MATCH 6" CL.1500
A 8 (203)	6 (152.5)
B 10.6 (270)	8.5 (216)
C 13.75 (349.2)	12.5 (317.5)
E 1.26 (32)	1.5 (38)
N 12	12

CUSTOMER CONNECTIONS	
D BASEPLATE DRAIN	1" NPT
E BEARING BRACKET DRAIN (D.E. & N.D.E.)	1" NPT
G PUMP DRAIN	1" ANSI B16.5 CL.1500 R.F.
H PRE-WARMING	1-1/2" ANSI B16.5 CL.1500 R.F.
G1 SUCTION	8" ANSI B16.5 CL.600 R.F.
G2 DISCHARGE	6" ANSI B16.5 CL.1500 R.F.
G3 BALANCE LINE	1-1/2" ANSI B16.5 CL.900 R.F.
R1 COOLING WATER INLET (MECHANICAL SEALS)	1" ANSI B16.5 CL.150 R.F.
R2 COOLING WATER OUTLET (MECHANICAL SEALS)	1" ANSI B16.5 CL.150 R.F.
R3 TO CONFIRM	
R4 TO CONFIRM	

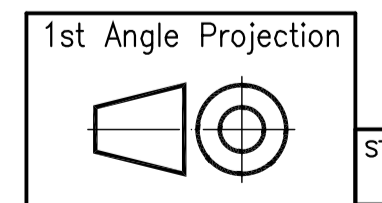
APPROX. WEIGHTS	
PUMP	8.752 LBS 3.970 Kg.
ELEC. MOTOR	13.890 LBS 6.300 Kg.
BASEPLATE	11.025 LBS 5.000 Kg.
LUBE SKID	485 LBS 220 Kg.
ACCESSORIES	1.323 LBS 600 Kg.
TOTAL	35.472 LBS 16.090 Kg.

TOLERANCES	
NOZZLES AND CONNECTIONS	LINEAL: ±.25 (±6 mm)
	ANGULAR: ±1° IN ANY DIRECTION
OTHER DIMENSIONS:	±1%
ALL DIMENSIONS IN	INCHES
	MILIMETERS ()



No Enclosure specified?

What are these connections? Are they potential Zachry Tie-Points?



PROPRIETARY NOTE
THIS MATERIAL IS THE PROPERTY OF FLOWSERVE, INC. AND IS SUPPLIED ONLY FOR THE PURPOSES INDICATED HEREIN. IT IS NOT TO BE REPRODUCED, COPIED, OR TRANSMITTED IN ANY FORM OR BY ANY MEANS, ELECTRONIC OR MECHANICAL, INCLUDING PHOTOCOPYING, RECORDING, OR BY ANY INFORMATION STORAGE AND RETRIEVAL SYSTEM. THE USER OF THIS MATERIAL SHALL BE RESPONSIBLE FOR OBTAINING ALL NECESSARY PERMITS AND APPROVALS FROM THE APPROPRIATE AGENCIES AND AUTHORITIES. THE USER SHALL BE RESPONSIBLE FOR OBTAINING ALL NECESSARY PERMITS AND APPROVALS FROM THE APPROPRIATE AGENCIES AND AUTHORITIES.

APPROVAL NOTE TO CUSTOMER
1-UNLESS OTHERWISE SPECIFIED, ALL DIMENSIONS SHALL BE IN INCHES UNLESS OTHERWISE SPECIFIED. ALL DIMENSIONS SHALL BE TO UNLESS OTHERWISE SPECIFIED.
2-CONNECTIONS, ALTERATIONS, ADDITIONS AND MODIFICATIONS SHALL BE THE RESPONSIBILITY OF THE USER. THE USER SHALL BE RESPONSIBLE FOR OBTAINING ALL NECESSARY PERMITS AND APPROVALS FROM THE APPROPRIATE AGENCIES AND AUTHORITIES.
3-IF ANY DIMENSIONS ARE NOT SPECIFIED, THE USER SHALL BE RESPONSIBLE FOR OBTAINING ALL NECESSARY PERMITS AND APPROVALS FROM THE APPROPRIATE AGENCIES AND AUTHORITIES.

P.O. NUMBER: 104009	FLOW: 2175 gpm
END USER: Gainesville Renewable Energy	HEAD: 5580 ft
JOB: FAGEN GAINESVILLE	BHP: 3451.1 BHP
PLANT: FAGEN GAINESVILLE	EFFICIENCY: 82.5%
SERVICE: 6X15WXH-7	RPM: 3580 rpm
ITEM: BFP	FLUID: Feedwater
SERIAL No.:	TEMPERATURE: 278 °F
	S.G.: 0.929 kg/ m ³

STATUS OF APPROVAL		OPERATING CONDITIONS	
ORDER No.	COS 11-10P40239	SCALE	NTS
DRAWN BY	LCASIRO	UNITS	mm
CHECKED BY	LOB	SHEET NO.	1/2
APPROVED BY	PH	REVISION	0
CAD FILENAME:	COS 11-10P40239-1100.1		

FLOWERVE	
Pump Division	Costaloda Operations
DWG TITLE GENERAL ARRANGEMENT	
PUMP TYPE 6X15WXH-7	
SIZE	A1
DRAWING NO.	6X15WXH86XE52
REV.	0